

# System Brain Corporation

Your problems with "mold and dirt" instantly and effortlessly!

Specialized for mold and dirt that won't come off! Nano-Maintenance, the commercial cleaner chosen by professionals

In spite of its overwhelming cleaning power, it is still safe for humans and gentle on the environment.



Nano-Maintenance is a unique professional cleaner, so it doesn't require the use of scrubbing with a brush using powerful mold prevention agents and bleach, but rather the cleaner permeates into walls, wood, and other materials to remove and eradicate mold and dirt from its roots.

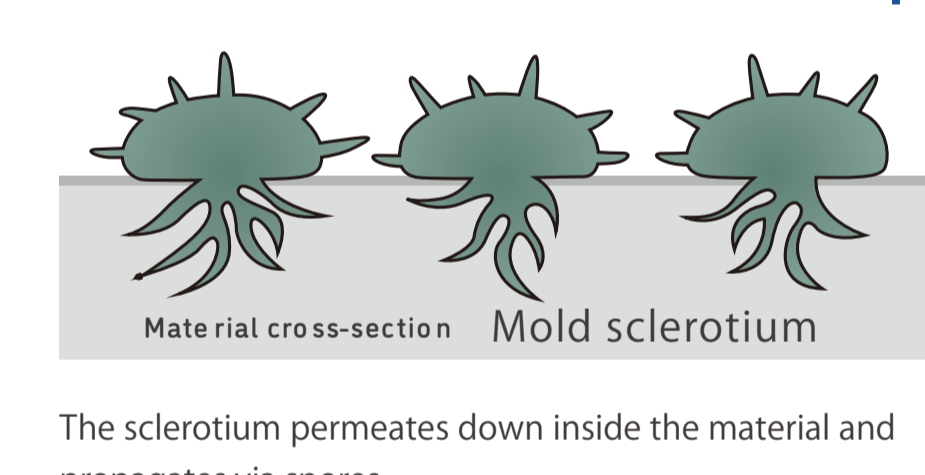
'Nano Maintenance SB method' is effective to make the solar panel generation efficiency better.



Silica molecules of a few nanometers adhere faithfully to the irregularities of the panel surface, allowing dust and dirt to run off together with rainwater due to the hydrophilic effect. In addition, regular maintenance is completed just by pouring water. This is proven in our nano maintenance for automobiles. Since the glass coating by nano maintenance has low glossiness, the light incidence rate of scattered light and near-infrared rays is improved, which leads to the improvement of the total power generation amount.

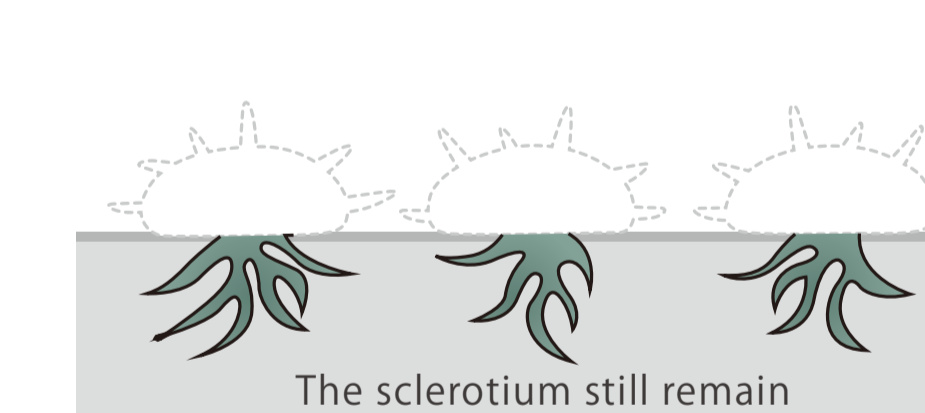
Dissolves stubborn mold by the roots

Illustration of mold penetration



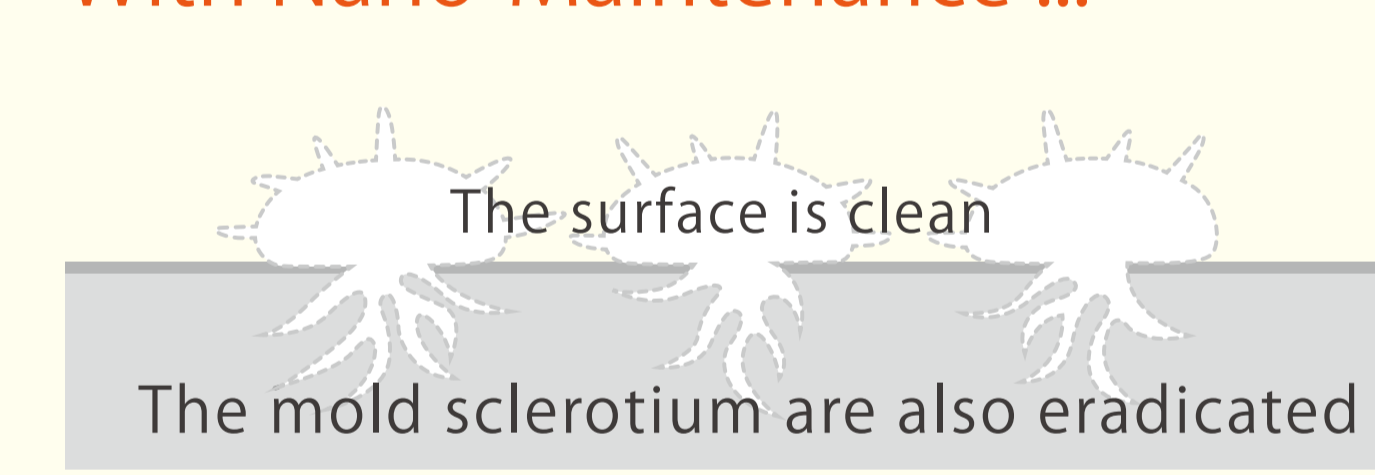
The sclerotium permeates down inside the material and propagates via spores.

When cleaning normally ...



The powerful cleaner or washing cleaned the surface, but inside there are still sclerotium remaining which will soon regrow into mold.

With Nano-Maintenance ...



Mold prevention finishing



By conducting mold prevention finishing, mold growth is prevented for a long time.  
\*The regrowth preventing agent is not included in SB-55.

Removes only mold and dirt without scratching, discoloring, or damaging building materials and material !!



Nano-Maintenance is a unique professional cleaner, so it doesn't require the use of scrubbing with a brush using powerful mold prevention agents and bleach, but rather the cleaner permeates into walls, wood, and other materials to remove and eradicate mold and dirt from its roots.

A method of execution that seems like simply connecting tap water to the unit and rinsing with water

Nano-Maintenance is a completely new glass system shield. Using only natural minerals and water, it creates a highly pure glass system membrane with electrochemically reactive plating (international patent applied for) on the surface of the target material to shut out dirt and make attached dirt easy to remove.

